



ALUMINIUM | GLASS  
PVC | TIMBER CONSTRUCTION  
MANUFACTURING  
AND ASSEMBLING



### PONZIO PT 50

Aluminium system profiles without thermal insulation mainly intended for the interior of buildings: boxes, partition walls, display cases, sliding doors (manually or automatically operated), double acting and smoke hermetic doors.

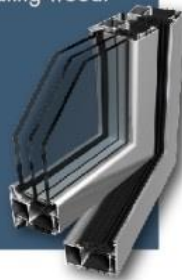
The PT50 system allows using a variety of fillings: glass, aluminium panels, "sandwich" fillings, panel boards and PVC with width 1 - 40 mm.



### PONZIO PE 78 N

Three-chamber system is intended for constructions with very high thermal requirements. "EURO" standard groove allows using a wide range of hardware and eases the mounting. There is a possibility to choose any RAL colour, as well as to have it anodized and lacquered for colour imitating wood.

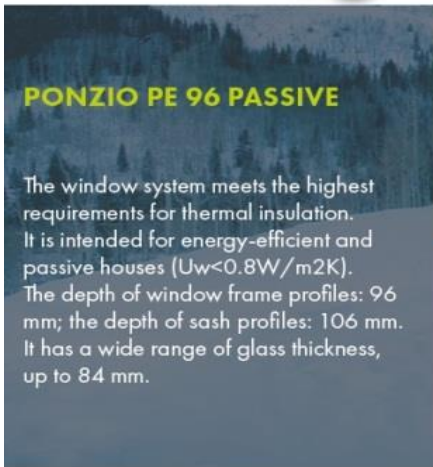
PE 78N HI doors –  
Uf from 1.5 W/m<sup>2</sup>K  
PE 78N HI windows –  
from 0.7 W/m<sup>2</sup>K



### PONZIO PF 152 HI

The transom post construction system assigned for curtain walls, rooves and skylights with enhanced thermal insulation. It has specially designed insulating input filling the space between glass panels and improving the parameters of the whole construction with its shape and characteristics. Their assembling is possible after glazing.

Ucw of 0.6 W/m<sup>2</sup>K  
(when 48 mm filling is applied).



### PONZIO PE 96 PASSIVE

The window system meets the highest requirements for thermal insulation. It is intended for energy-efficient and passive houses (U<sub>w</sub> < 0.8 W/m<sup>2</sup>K). The depth of window frame profiles: 96 mm; the depth of sash profiles: 106 mm. It has a wide range of glass thickness, up to 84 mm.



15 years' experience  
More than 2000 successfully implemented projects in Latvia, Sweden, Germany, France, Norway, Finland, Cyprus, Denmark, Russia and the Baltic countries



### PONZIO PE 78 EI

Three-chamber system is intended for setting up internal or external firewalls. The system uses thermal pads which ensure resistance to fire: EI 15, EI 30, EI 45, EI 60, EI 90, and EI 120. There is a possibility to choose any RAL colour, as well as to have it anodized and lacquered for colour imitating wood.



# ALUMINUM SYSTEMS

## PONZIO PE 68

Three-chamber system intended for external structures with very good insulation properties. "EURO" standard hardware groove is used in a wide variety of window types: fix, tilt and turn, outward opening, hidden sash windows, and etc. There is a possibility to create arched constructions.

PE 68 HI doors Uf from 1.5 W/ m2K  
PE 68 HI Windows Uf from 1.3 W/ m2K



## PONZIO PW 93 WOOD

The main characteristic feature is the connection between wood and aluminium profiles with 24 mm thermal break. Various constructions can be made in this system: double-sash windows, tilt and turn windows, side hung casement windows. The PW 93 Wood uses wood straps from tropical wood with good quality. It is resistant to weather conditions and has an aesthetic look.

Uf = 1,7 - 2,0 W/ m2K



## PONZIO SL 1600TT

Thermally insulated lifting and sliding system intended for the production of external construction elements. The structure allows making stable large size constructions, even with 8 very large heavy sashes. The advantage of the structure is its high resistance to weather conditions.

SL 1600 PLUS version - Uf from 1.8 W/ m2K.  
SL 1600 HI version - Uf from 0.9 W/ m2K.

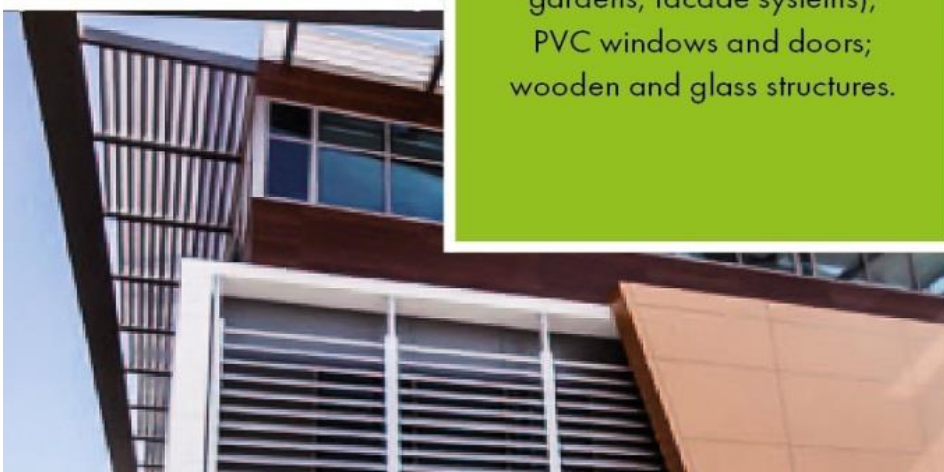


# GLASS STRUCTURES

Glass structures possess outstanding aesthetic and technical qualities. Glass walls and partitions are widely used in indoor divisions - they are excellent in holding up sound and save space for spacious impression. We also offer balcony glazing.



Aluminium Building Products (windows, doors, winter gardens, facade systems);  
PVC windows and doors;  
wooden and glass structures.



## SUNBREAKER - EXTERNAL SHADING SYSTEM

Sun-breaker is a mobile system with a blade rotation ranging from 0 to 90 degrees; it can be fixed both horizontally and vertically. The blades and guide rails are made of thin-walled extruded aluminium which makes the whole construction lightweight, yet durable. High quality and fast installation makes this product very attractive. It can be used as windbreaker. It serves as a decorative part of the building. It is architecturally attractive and reduces energy consumption in unfavourable weather conditions.



**GEALAN S 8000 IQ**

Profile system with the width of 74 mm which meets all requirements of modern window technology. It has remarkable heat retention qualities thanks to its six-chamber construction. Rich colour palette allows an unlimited variation in finishing. The system has a very good statics due to steel reinforcements used in the frame and leaf.

$U_f=0.6$  for 44 mm glazing,  
 $U_w=0.85$  W/m<sup>2</sup>K



**GEALAN S 9000**

The 82.5 mm installation depth, six profile chambers in the frame, and sash with up to three end-to-end sealing levels guarantee outstanding heat insulation. In the result of it, windows meet even the highest requirements.

$U_f$  value to  
 $0.89$  W/m<sup>2</sup>K



**IGLO ENERGY**

The IGLO ENERGY system is developed by using the most up-to-date materials and advanced technologies complying with strict requirements of the market. The 7-chamber frame and sash profiles are exclusively made of A-class prime materials; the installation depth is 82 mm. The maximum glazing thickness is up to 48 mm.

$U_w = 0.6$  W/M<sup>2</sup>K.  
It is an absolute record for energy efficiency; these efficient windows serve as the proof for excellent insulating properties of this system.



**IV78**

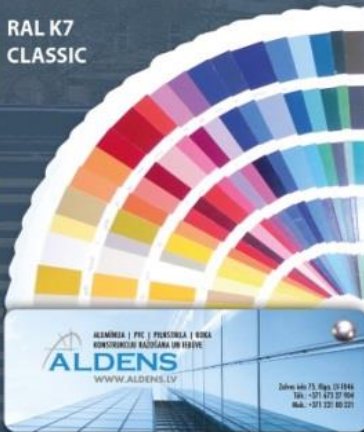
Wooden window system is modern and environmentally friendly. The system has excellent thermal and sound insulation properties; it is resistant to rain and wind load. The windows are easy to use and to maintain. They have triple glazing with enhanced thermal insulation  $U_g = 0.7$  W/m<sup>2</sup>K.

**IV92**

We offer wooden front doors and windows for the customers from northern regions. Installation depth - 92 mm (energy efficiency indicators -  $U_w=0.9$  W/m<sup>2</sup>K wooden window frames, and sashes), 50 mm thick and the double chamber wooden window glass unit (energy efficiency ratio -  $U_g=0.5$  W/m<sup>2</sup>K 50), which meets the highest modern requirements.



**RAL K7 CLASSIC**



75 Zāles str., Rīga, LV-1046  
✉ [aldens@aldens.lv](mailto:aldens@aldens.lv) 🌐 [www.aldens.lv](http://www.aldens.lv)  
☎ +371 221 00 221; +371 673 27 904

